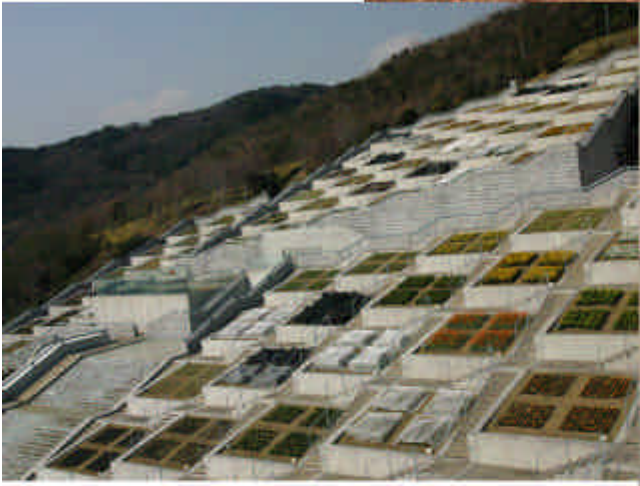


AWAJIYUMEBUTAI

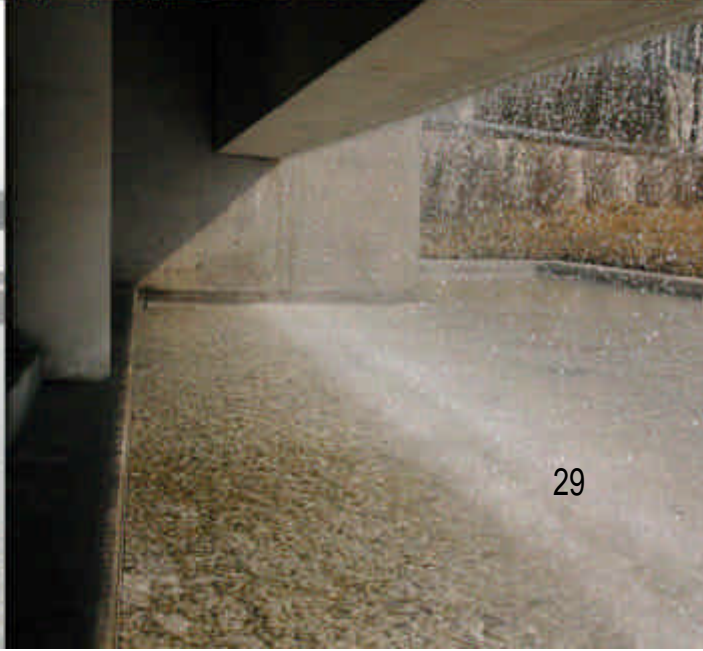
2000

Tadao Ando Architect & Associates
Tsuna-country Hyogo-prefecture



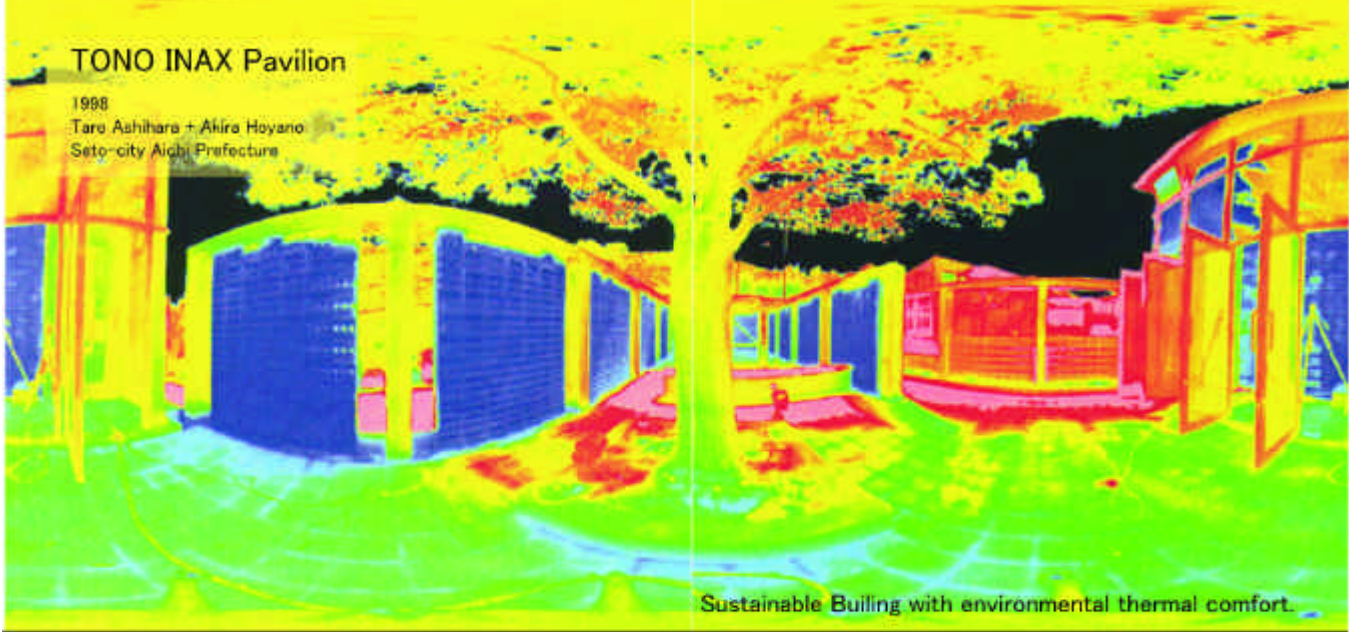
It was the main facility for the [JAPAN FLORA 2000] (Floral Expo in Awaji Island). It is composed of 5 areas, which are 'conference room', 'westin hotel', 'restaurants and shops' and 'botanical garden in greenhouse'. The architecture attracts the visitors to Ando's world and there is daring space making the most of nature and water.

Time increase beauty. *Nature* produces happiness. The sunlight of the positive shines. The sound of water is BGM. The color of the shadow moves. The monument is of the mind. It is enriched with air four seasons occasional. Feeling of wind. Rest in tree crown shadow.



TONO INAX Pavilion

1998
Taro Ashihara + Akira Hoyano
Seto-city Aichi Prefecture



Sustainable Building with environmental thermal comfort.

The cooling load and the emission of the heat is the cause of the heat island phenomenon. This nursing home is made by plants and perforated concrete which retains water and modifies the microclimate of the surroundings. Bricks and plants sprinkled by water lets in the wind and cool the air passively. This is a sustainable building that will function without using fossil energy.

